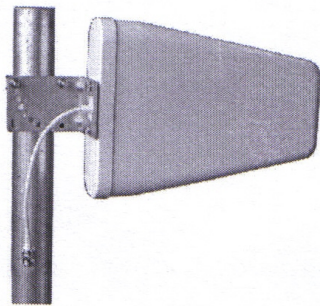


TDJ-0825DSAL

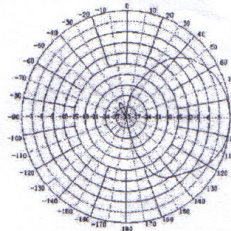
Broadband Directional Antenna

Technical Sheet

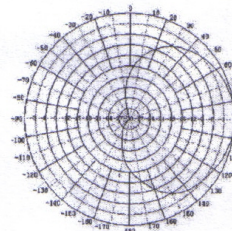


Features

- 800MHz to 2500MHz broad band
- Low VSWR
- Support the popular communications system currently
- Sealed with radome, Strong protection ability
- Supplied with down-tilt bracket for mast mounting, a down-tilt bracket for wall mounting is optional



E plane



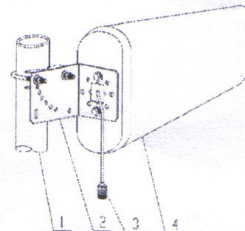
H plane

Note: The picture is for reference only, please kindly consult with the real product.

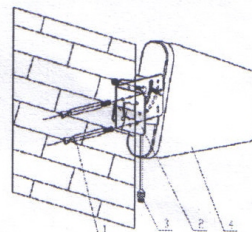
Specifications

| | | | |
|--|---|------------------------|-----------|
| Model | | TDJ-0825DSAL | |
| Freq.Range-MHz | | 800-960 | 1710-2500 |
| Beamwidth-° | E | 60 | 55 |
| | H | 90 | 70 |
| F/B Ratio-dB | | ≥18 | ≥18 |
| Gain-dBi | | 8.2 | 9.5 |
| VSWR | | ≤1.5 | |
| Impedance-Ω | | 50 | |
| Polarization | | Vertical | |
| Max.Power-W | | 100 | |
| Connector | | N female or customized | |
| Dimensions (with bracket) -mm | | 293×210×65 | |
| Weight(without bracket)-Kg | | 0.92 | |
| Mast Diameter-mm | | φ40 to 50 | |
| Note:When installing, you should let the side with a little hole face down to prevent the antenna radome from water. | | | |

Installation Sketch



Mast Mounting



Wall Mounting

1. Mast(user-provide) or expansion bolt; 2. "L" mounting kit;
3. connector; 4. antenna