

# BOA-2412

2.4~2.5GHz Omni Antenna 12dBi

BOA-2412 antennas are professionally engineered and manufactured with the highest industry quality at the lowest possible price providing extreme value.

BOA-2412 is designed for the 2.4GHz ISM band, supporting 2.4 to 2.483 GHz and provides superb performance in IEEE 802.11b/g WiFi and Bluetooth applications.

BOA-2412 includes mounting bracket and hardware for up to 2" masts. Made with fiberglass and comes with an integrated N Female

## Applications:

2.4 - 2.5 GHz ISM Band

IEEE 802.11b, 802.11g, 802.11n Wireless LAN

Directional and multipoint applications

Bluetooth

Public Wireless Hotspot

WiFi, RFID

Wireless Video Systems

## Features :

Superior performance

Light weight

All weather operation

DC Short lightning protection

Installed for vertical

Includes tilt and swivel mast mount

In accordance with customer needs to change the color or features

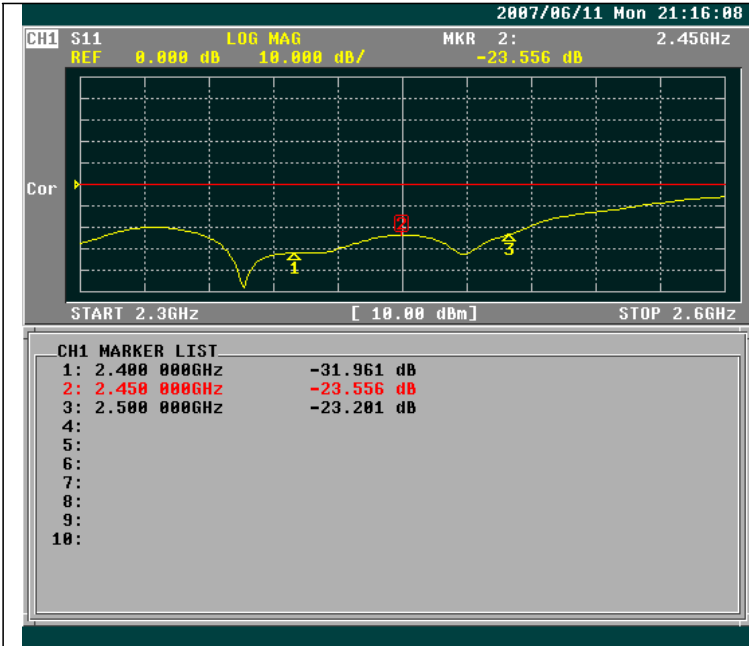


<b>Model</b>	BOA-2412
<b>Frequency</b>	2.4-2.5GHz
<b>VSWR</b>	≤ 1.5
<b>Gain</b>	12dBi
<b>Polarization</b>	Vertical
<b>Power Handling</b>	50 Watts
<b>Impedance</b>	50 Ω
<b>Beam Width</b>	H: 360° / V: 8°
<b>Connector</b>	N Female
<b>Operation Temp</b>	-40°C ~ +80°C
<b>Dimension</b>	1130*70 mm
<b>Mounting</b>	32 ~ 45 mm ( 1.2 ~1.75 inch )
<b>Weight</b>	700g

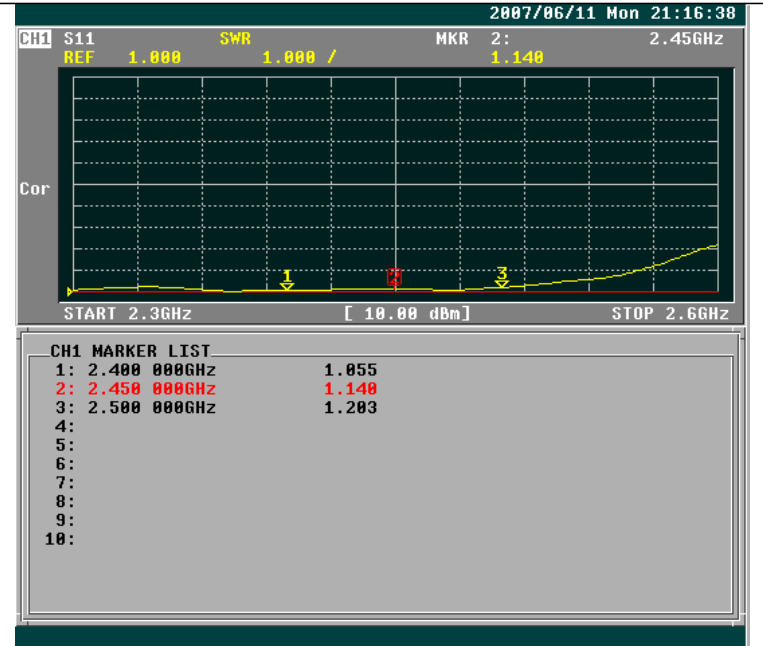
# BOA-2412

2.4~2.5GHz Omni Antenna 12dBi

## Network Analyzer Test Report



Return loss

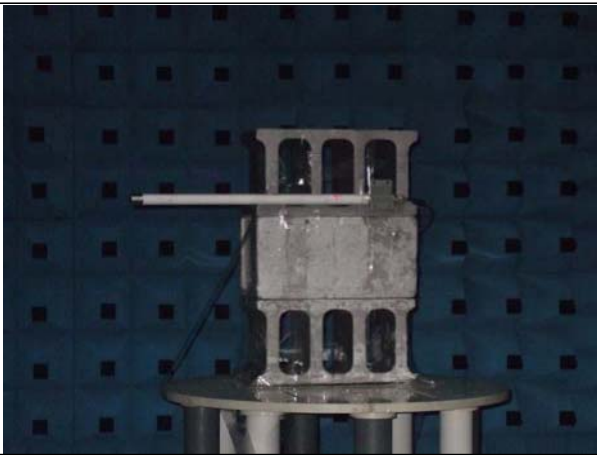


V.S.W.R

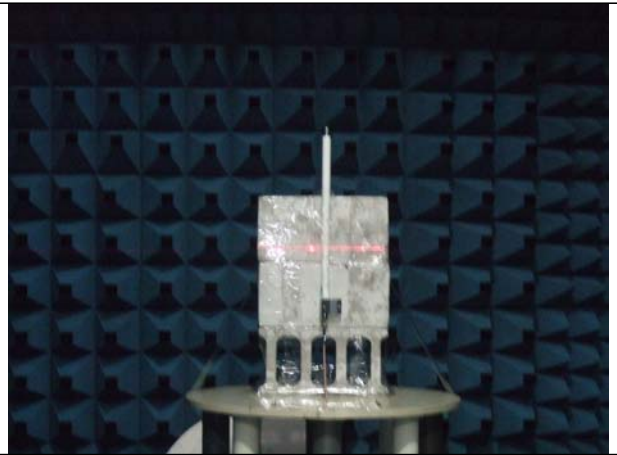
# BOA-2412

2.4~2.5GHz Omni Antenna 12dBi

## RF Chamber Test Report Frequency: 2.4 ~ 2.5GHz



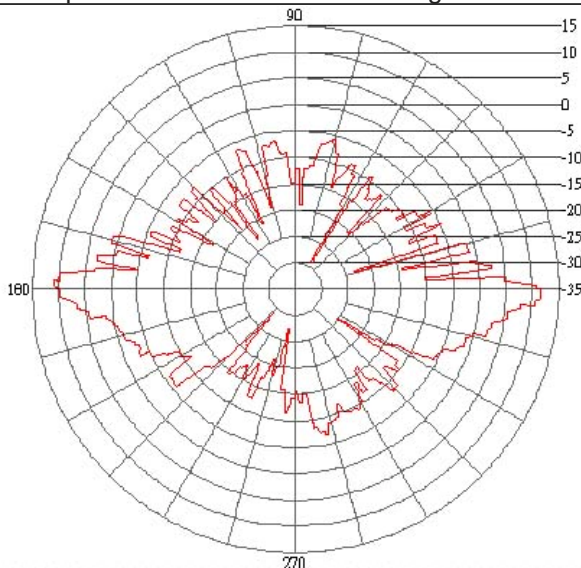
Vertical Pattern Photos



Horizontal Pattern Photos

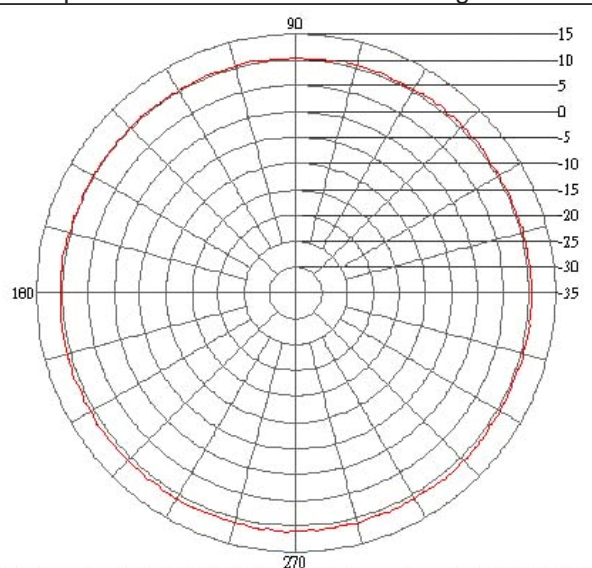
Frequency: 2.4-2.5Ghz

E-plane co-pol ----- 3-dB beam-with=8 Deg



Vertical Pattern

H-plane co-pol ----- 3-dB beam-with=360 Deg

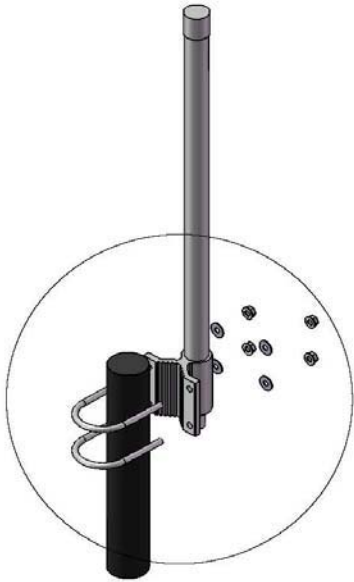


Horizontal Pattern

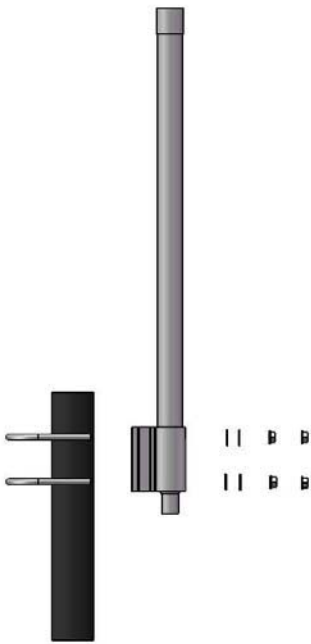
# BOA-2412

2.4~2.5GHz Omni Antenna 12dBi

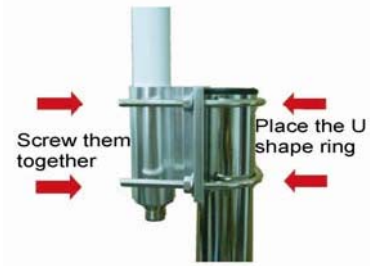
## Mounting Kits Install Guide



2 : 5



**1.**



**2.**



**3.**

**Finish**

