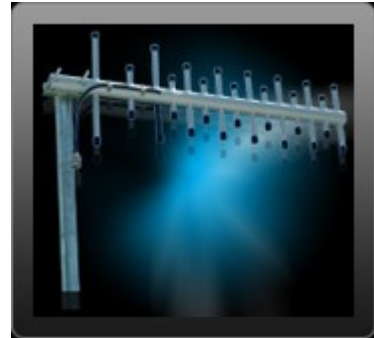


YAGI 12 dBi ANTENNA

- 12 dBi gain & all weather
- Heavy-duty 1" stainless steel boom
- Welded elements for superior strength
- Supports multiple bands
- For use with repeater or booster
- U Bolt Mounting bracket included



Bandwidth: 800-900MHz / 1800-1900MHz

This high gain quad band yagi antenna can you be used either as a donor antenna or service antenna depending on your application. With it's 35° beamwidth it is ideal for capturing a signal in a specific direction.

Specifications

Frequency Range	824-960MHz / 1710-1990MHz
Gain	12 dBi
Polarization	Vertical
Vertical Beam-width	30°
Horizontal Beam-width	35°
Impedance	50 ohms
Max. Input Power	100 Watts
VSWR	< 1.5:1 avg
Weight	493g (1.14 lbs)
Connector	N Female
Elements	15
Dimensions	21.25 in. (539.75mm) Length
	8.5 in. (215.9mm) Tallest Element

