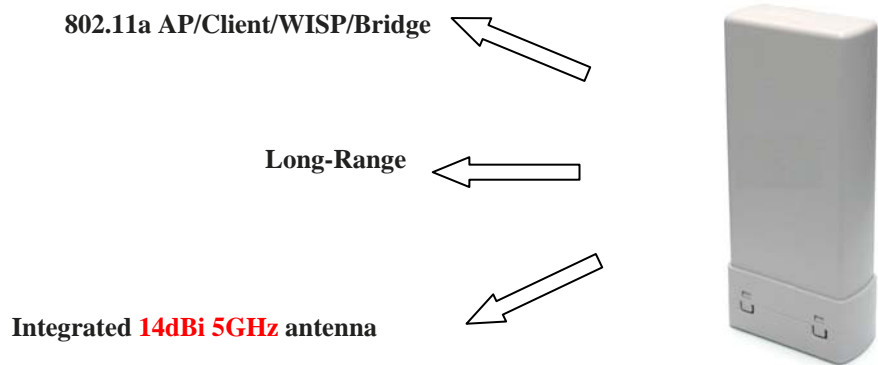


6000C-48

Long-Range 802.11a Outdoor AP/CPE

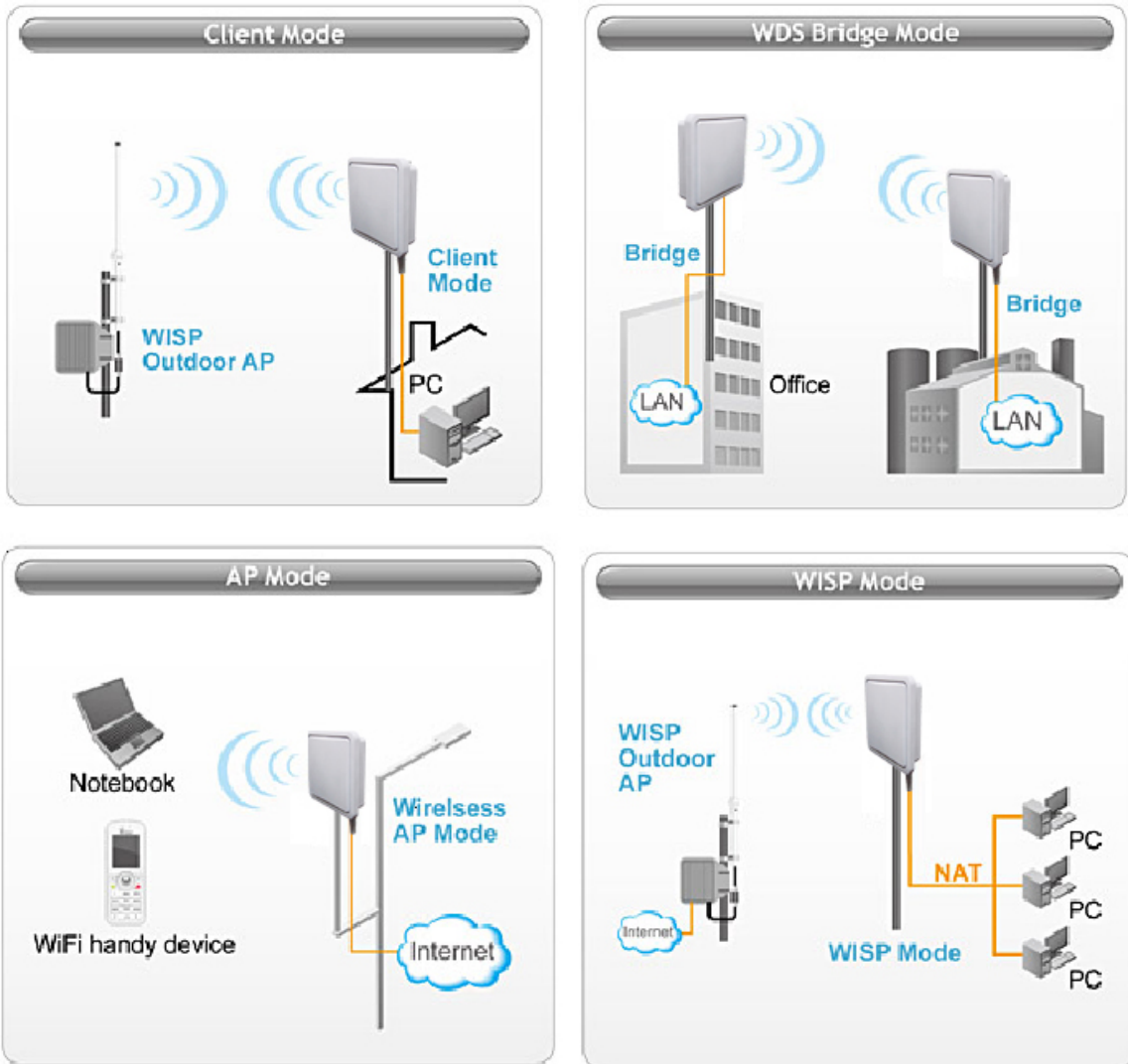


Standard	IEEE 802.11a, IEEE 802.3, IEEE 802.1x
CPU	Atheros AR2313
Flash	8MB
RAM	32MB
Interface	1* RJ45 LAN Ports
Antenna	1 x Integrated 14dBi 5GHz antenna
Polarity	Adjustable Vertical/Horizontal
Output Power	802.11a: 500mW
Sensitivity	802.11a: -94dBm @6Mbps; -74dBm @54Mbps
Security	64/128-bit WEP, WPA(TKIP with IEEE 802.1x), WPA2, AES
Operation Mode	AP / Client / WISP / WDS Bridge
Data rate	802.11b: 1, 2, 5.5 and 11Mbps 802.11g: 6, 9, 12, 18, 24, 36, 48, and 54Mbps
Channel	802.11a 5.15~5.25GHz (lower band for US, Canada, Japan) 5.25~5.35GHz (middle band for US, Canada) 5.725~5.825GHz (upper band for US, Canada) 5.50~5.70GHz (for Europe)
Software	Site Survey with RSSI Signal Survey Bandwidth Control SNMP v1/v2 support Support adjustable output power Distance Adjustment WEP over WDS support Radius Supported
Mounting	Pole Mount
Power Supply	PoE 18V/1 A

6000C-48N

Long-Range 802.11a Outdoor AP/CPE

Applications:



Accessory:



12V / 1A Power Adapter

PoE Adapter

Mast Bracket Kits