



BWAP02O-48

IEEE 802.11a/b/g SNMP Access Point / Bridge / Multiple Bridge/AP Client

The BWAP02O-48 is High-Power AP / Bridge /Multiple Bridge/ AP Client is designed for connecting wireless communication devices together to from a wireless network, which operates in the 2.4Ghz or 5.8Ghz band compliant with IEEE 802.11a/b/g Standard. BWAP02O-48 supports a data transmission rate up to 54Mbps, which is best suited for Enterprises, or off-site location required LAN or Internet access without effort of networking wired cabling issue.

For high level deployment, BWAP02O-48 could also support 12VDC Power over Ethernet feature to create more wireless backbone networks without the environment limitation. It also provides advance security enhancement with up to 128-bit WEP, WPA, WPA2, RADIUS MAC authentication.

Features:

IEEE 80.11a, 802.11g and 802.11b standard compliant with special channels support from 2.4GHz and 5.8GHz

Support operation mode Access Point, Bridge, Multiple Bridge/AP Client Function.

Support data rate for 54Mbps

Strong network security with WPA, WPA2 and 64/128 bit WEP encryption, RADIUS

MAC authentication and MAC Address Filtering

Easy Web access to control

Adjustable Output Power Level

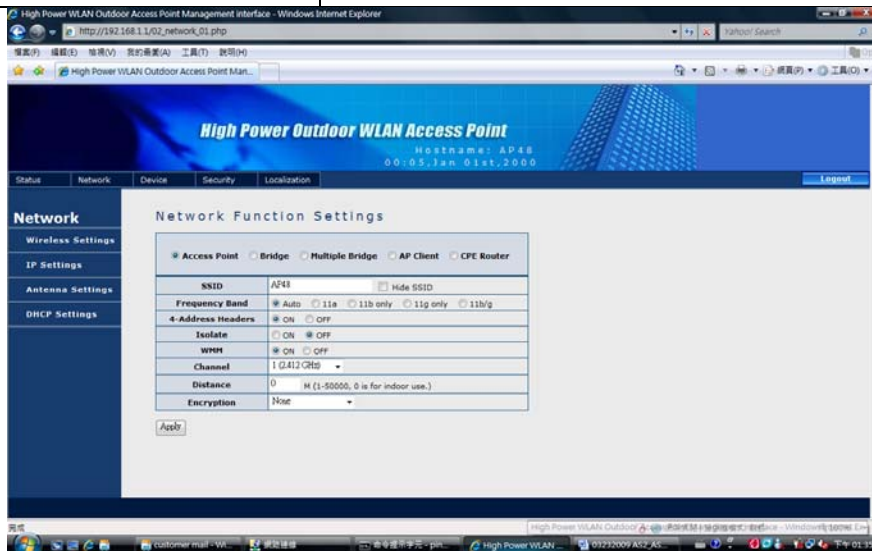
Support PoE for easy install

Hardware watchdog

Specifications

| | |
|------------|---|
| Frequency | 802.11a 5180 - 5825 MHz 802.11g 2412 - 2472 MHz 802.11b 2412 - 2484 MHz |
| Modulation | 802.11a/g OFDM (64-QAM, QPSK, BPSK) 802.11b DSSS (DBPSK, DQPSK, CCK) |

| | |
|---|---|
| Operating Channels (For Standard Wi-Fi only) | 802.11a 13 Channels (USA) 19 Channels (Europe) 4 Channels (Japan) 802.11b/g 11 Channels (USA) 13 Channels (Europe) 14 Channels (Japan) |
| Transmit Power | 5.8Ghz : 300mW 2.4Ghz : 650mW |
| Receiver Sensitivities | 802.11a -92 dBm @ 6-24 Mbps -80 dBm @ 36 Mbps -76 dBm @ 48 Mbps -72 dBm @ 54 Mbps 802.11g -92 dBm @ 6-24 Mbps -80 dBm @ 36 Mbps -76 dBm @ 48 Mbps -72 dBm @ 54 Mbps 802.11b -96 dBm @ 1 Mbps -95 dBm @ 2 Mbps -93 dBm @ 5.5 Mbps -92 dBm @ 11 Mbps |
| LAN | PoE port with 10/100 Ethernet auto negotiation, auto-MDI-X Full/half duplex |
| Monitor | Hardware Watchdog |
| Security | WPA, WPA2 and 64/128 bit WEP encryption, RADIUS |
| Power | 110V AC ~ 220V AC, output 12VDC |
| Networking | 802.11a & 802.11g/b compatibility |



PS. The issued party reserves the right for any modification and updating of specification and functions without a notice in advance.