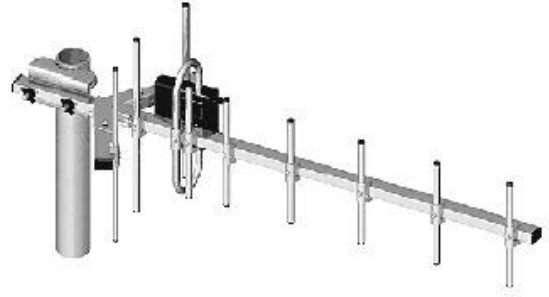

YAGI 13dBi Directional Yagi Antenna

- Key Features:
- 13.5 dBi Directional Gain
 - High Performance
 - V/H Polarization Customer Adjustment
 - Simple installations
 - Durability in Severe Weather Conditions



- Applications:
- 900MHz ISM Band
 - Point to Multipoint Applications
 - GSM
 - SCADA
 - RFID
 - Wireless Video Links
 - Wireless LAN systems
 - Non Line of Sight (NLOS)
 - Cellular

Description

Antenna with built in loop symmetrizer. Elements are made of aluminum, steel structural elements are galvanized. Assembling of the antenna is very easy and takes about one minute.

Electrical Properties

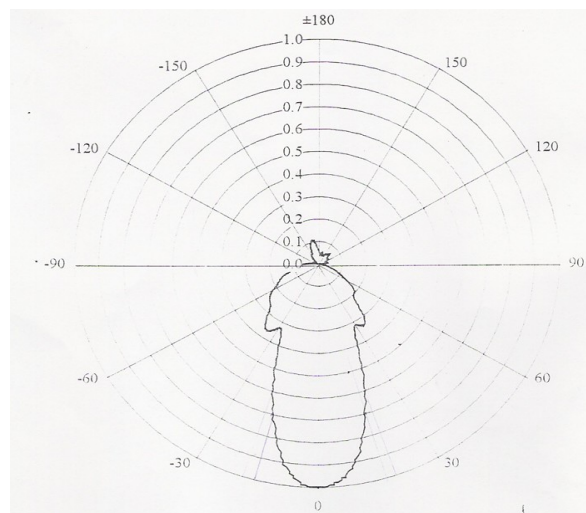
Frequency	870 – 960 MHz
Gain	13.5 dBi
Polarization	Vertical or Horizontal
Beamwidth deg horizontal	32°
Beamwidth deg vertical	34°
VSWR	1,1
Front to back ratio	26 dB
Impedance	50 Ohm

Mechanical Properties

Input Connector	FME or N type
Dimensions	700 mm /27.5"
Weight	700 g /1.54 lbs
Base material	Aluminum
Construction	All – weather operation
Number of elements	10

Antenna Patterns

Azimuth



Elevation

