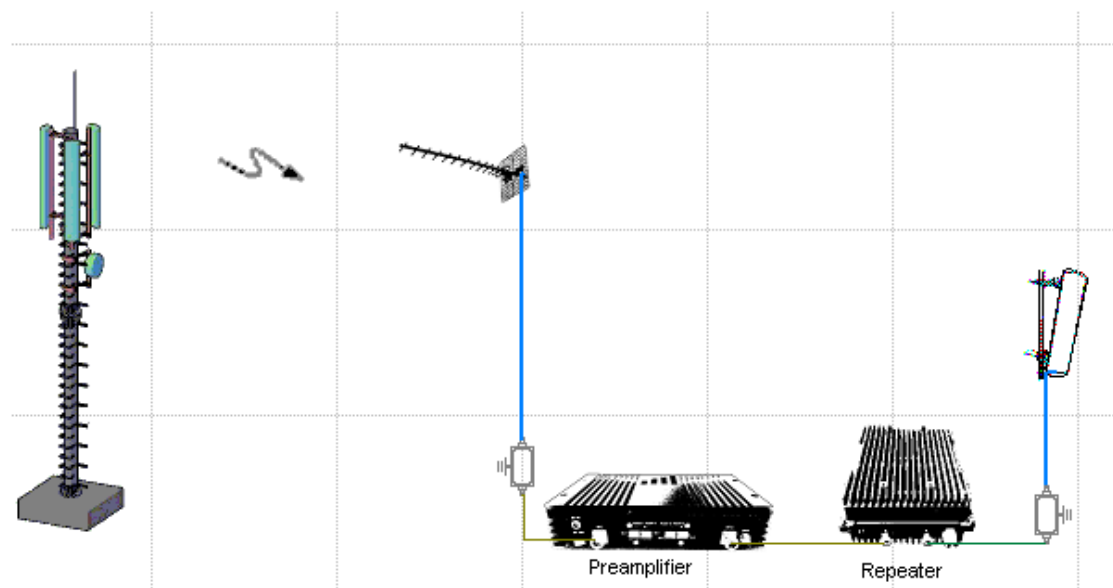


A Pre-amplifier is a device which increases the strength of a weak signal prior to feeding it to a repeater in a system. It is usually used at a repeater site where it is far from the BTS tower in **Suburbs**.



- It booster received signal via donor antenna, and pick up maximum signal to BS port of repeater in downlink, so repeater can work with full output power and maximum coverage range.
- It increases this UL power of repeater, and transmit it BTS tower with sufficient strength signal.

Product Features

- Easy set DL/UL gain via local **PIN switch** manually for each band
- Smart Automatic Level Control (**ALC**) to reduce interference to BTS
- Simple installation with external AC/DC adapter
- Dual ports and full duplex design



Technical Specifications

Items	Specification	
	Uplink	Downlink
Frequency (Customized)	1850 – 1910 MHz	1930– 1990 MHz
Gain	≥ 20 dB	≥20 dB
Output Power	27dBm	0dBm
ALC Scope	≥ 20dB	
In-Band Ripple	≤8dB	
I/O Impedance	50 Ω	
VSWR	≤2	
Noise Figure	≤ 5 dB	
Inter-modulation Attenuation	-40dBc	
Spurious Emission	≤-36dBm(9KHz~1GHz) ≤-30dBm(1~12.75GHz)	
System Delay	≤ 0.5μs	
Max Input Power Level(1minute)	-10dBm	
RF Connector	N-Type (Female)	
Operating Temperature	-15~ +55 °C	
Power Supply(Customized)	AC100~240VAC , DC+9V/4A	
Shipment Dimension (mm)	270mm*220mm*85mm355	
Shipment Weight(kg)	4.0kg	