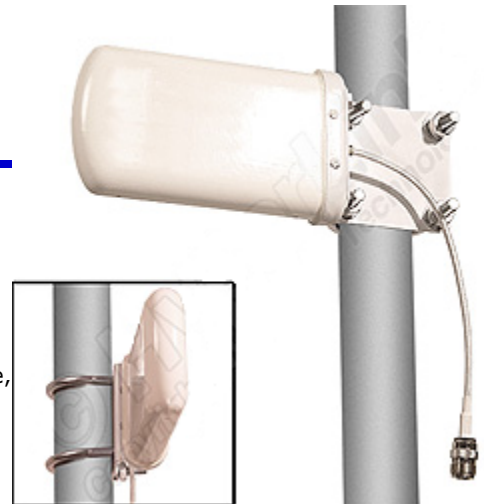


2.3 GHz to 6.5 GHz Ultra-Wideband (UWB) 8 dBi Radome Enclosed Log Periodic Antenna

Applications and Features

- Applications:**
- 802.11a, 802.11b, 802.11g and 802.11n access points and routers
 - 802.16 and 802.20 applications
 - WiMAX Technology
 - WiFi Systems
 - Homeland Security and Public Safety Services: Fire, Police, Security

- Features:**
- Ultra-Wideband design
 - Ideal for use with multiband access points and routers
 - Superior performance
 - Compact size, low profile and easy to mount
 - 9 inch coax lead



Model: HG2458-08LP

Description

Superior Performance

The HyperGain® HG2458-08LP is a high performance ultra wide band log periodic antenna designed to operate from 2.3 GHz to 6.5 GHz. This Ultra-Wideband design eliminates the need to purchase different antennas for each frequency. This simplifies installations since the same antenna can be used for a wide array of wireless applications where wide coverage is desired. The broadband characteristics of the antenna enables it to operate over a very wide frequency rang with consistant gain. This antenna features 8 dBi of gain and a 60 degree beam width. This antenna is ideal for use with the following applications:

- ◇ 2.3 GHz WCS/CDMA band
- ◇ 2.4 GHz 802.11a, 802.11b, 802.11g and 802.11n
- ◇ 2.3-2.5 GHz, 2.5-2.7 GHz, 3.4-3.5 GHz and 3.3-3.9 GHz WiMAX
- ◇ 2.6 GHz MMDS, 802.16, 802.20
- ◇ 3.5 GHz 802.16e
- ◇ 4.9 GHz homeland security band
- ◇ 5.3 GHz, 5.4 GHz and 5.8 GHz 802.11a
- ◇ 5.8 GHz ISM, UNII and Mesh Networks

Rugged and Weatherproof

The internal components of this antenna are enclosed within a UV-stable white fiberglass radome for all-weather operation. It is supplied with a swivel mast mount kit.

Specifications

Electrical Specifications

Frequency	2300-6500 MHz
Gain	8 dBi
Horizontal Beam Width	80 degrees
Vertical Beam Width	60 degrees
Impedance	50 Ohm
Max. Input Power	50 Watts
VSWR	≤1.5:1
Front to Back Ratio	≥20 dB

Mechanical Specifications

Weight	1.3 lbs. (.6 kg)
Dimensions L x H x W	6.3 x 3.5 x 1.3 in (162 x 90 x 33 mm)
Radome Material	UV-stable white fiberglass
Operating Temperature	-40° C to to 85° C (-40° F to 185° F)
Mounting	1.5" (40 mm) to 1.9" (50 mm) dia. masts
Polarization	Vertical

Wind Loading Data

Wind Speed (MPH)	Loading
100	8.9 lb.
125	13.8 lb.

Antenna Gain Patterns

